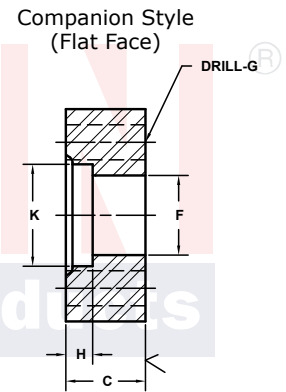
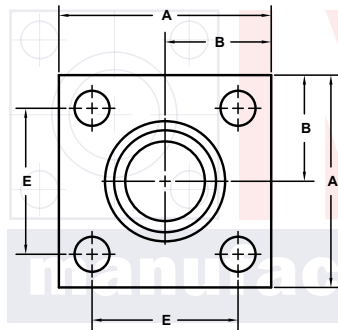
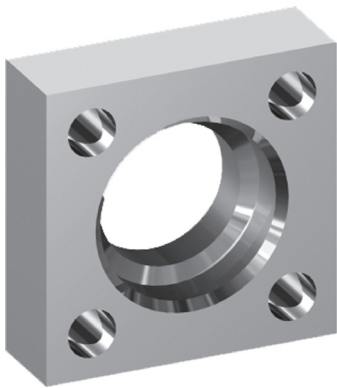


SOCKET WELD PIPE IN-LINE FLANGES

JIS B 2291 BOLT PATTERN (210K)							TYPE SHB (CLEARANCE) x JIS Pipe								
FLANGE SIZE	PIPE SIZE	PART NUMBER	A	B	C	Emm	E	F	Gmm	H	K	MOUNTING KIT®			WT
												PART NO.	SCREW SIZE	O-RING	
15	15	1502-08-08M	2.50	1.25	.87	40.0	1.574	.63	11.0	.43	.874	-----	-----	---	1.3
20	20	1502-12-12M	2.75	1.38	.87	45.0	1.772	.81	11.0	.47	1.091	-----	-----	---	1.5
25	25	1502-16-16M	3.25	1.62	1.10	53.0	2.086	.98	13.0	.55	1.358	-----	-----	---	2.5
32	32	1502-20-20M	3.50	1.75	1.10	63.0	2.480	1.24	13.0	.63	1.701	-----	-----	---	2.9
40	40	1502-24-24M	4.00	2.00	1.38	70.0	2.756	1.48	18.0	.71	1.933	-----	-----	---	4.7
50	50	1502-32-32M	4.50	2.25	1.38	80.0	3.150	1.87	18.0	.79	2.406	-----	-----	---	5.7
65	65	1502-40-40M	5.50	2.75	1.75	100.0	3.937	2.36	22.0	.86	3.035	-----	-----	---	10.4
80	80	1502-48-48M	6.25	3.12	1.75	112.0	4.409	2.80	24.0	.98	3.543	-----	-----	---	13.0

MATERIAL:
Low Carbon Steel



Model 1502 / 1532

3181 TRI-PARK DR. GRAND BLANC, MI 48439 800-521-7918 810-953-1380 FAX 810-953-1385 INFO@MAINMFG.COM

JIS B 2291 BOLT PATTERN (210K)							TYPE SHB (CLEARANCE) x American Pipe								
FLANGE SIZE	PIPE SIZE	PART NUMBER	A	B	C	Emm	E	F	Gmm	H	K	MOUNTING KIT®			WT
												PART NO.	SCREW SIZE	O-RING	
15	1/2	1532-08-08M	2.50	1.25	.87	40.0	1.574	.63	11.0	.50	.860	-----	-----	---	1.3
20	3/4	1532-12-12M	2.75	1.38	.87	45.0	1.772	.81	11.0	.50	1.070	-----	-----	---	1.5
25	1	1532-16-16M	3.25	1.62	1.10	53.0	2.086	.98	13.0	.50	1.335	-----	-----	---	2.5
32	1 1/4	1532-20-20M	3.50	1.75	1.10	63.0	2.480	1.24	13.0	.50	1.680	-----	-----	---	2.9
40	1 1/2	1532-24-24M	4.00	2.00	1.38	70.0	2.756	1.48	18.0	.62	1.920	-----	-----	---	4.7
50	2	1532-32-32M	4.50	2.25	1.38	80.0	3.150	1.87	18.0	.62	2.411	-----	-----	---	5.7
65	2 1/2	1532-40-40M	5.50	2.75	1.75	100.0	3.937	2.36	22.0	.75	2.911	-----	-----	---	10.4
80	3	1532-48-48M	6.25	3.12	1.75	112.0	4.409	2.80	24.0	.75	3.540	-----	-----	---	13.0

① Order Separately