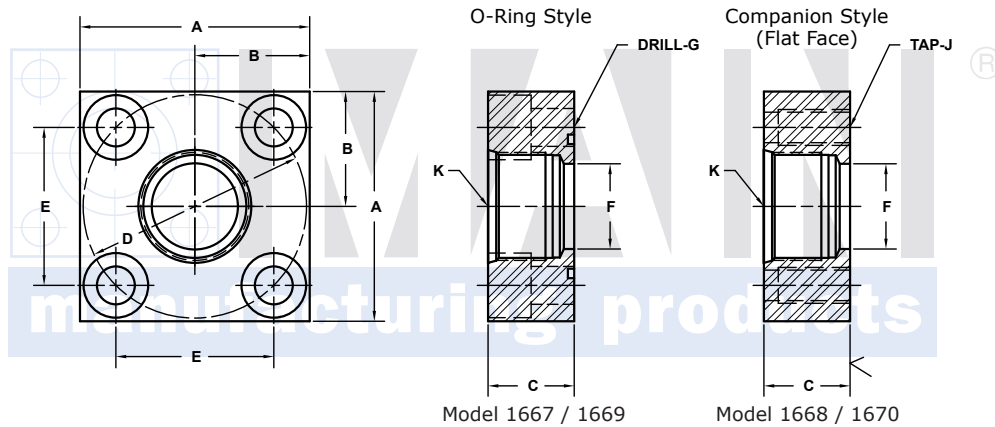
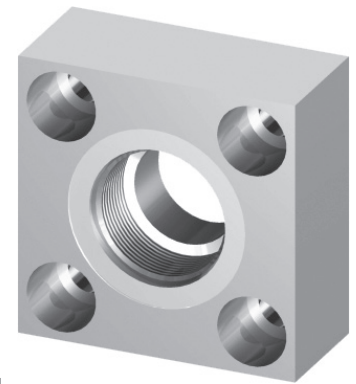


SAE J1926 THREADED IN-LINE FLANGES

ISO 6164										250 BAR SERIES				
FLANGE SIZE	PORT SIZE	PART NUMBER	A	B	C	Dmm	E	F	Gmm Jmm	K	MOUNTING KIT ^①			WT
											PART NO.	BOLT SIZE	O-RING	
10	-6	1667-06-06M	1.50	.75	1.25	35	.974	.47	6.5	9/16-18	MKM 5568	M6 x 35	115	.7
		M6x1												
13	-8	1667-08-08M	1.75	.88	1.25	42	1.170	.50	9.0	3/4-16	MKM 512	M8 x 35	210	.8
		M8x1.25												
19	-12	1667-12-12M	2.00	1.00	1.50	50	1.392	.75	9.0	1 1/16-12	MKM 5559	M8 x 35	214	1.2
		M8x1.25												
25	-16	1667-16-16M	2.50	1.25	1.50	62	1.726	1.00	11.0	1 5/16-12	MKM 503	M10 x 40	219	1.8
		M10x1.5												
32	-20	1667-20-20M	3.00	1.50	1.50	73	2.032	1.25	13.5	1 5/8-12	MKM 1527	M12 x 40	222	2.5
		M12x1.75												
38	-24	1667-24-24M	3.50	1.75	1.75	85	2.366	1.50	17.5	1 7/8-12	MKM 1544	M16 x 45	225	3.8
		M16x2												
51	-32	1667-32-32M	4.00	2.00	1.75	98	2.728	1.94	17.5	2 1/2-12	MKM 1524	M16 x 45	228	4.8
		M16x2												
56	-32	1667-40-32M	4.75	2.38	2.00	118	3.285	2.32	22.0	2 1/2-12	MKM 5570	M20 x 60	232	8.5
		M20x2.5												
63	-32	1667-48-32M	5.50	2.75	2.25	145	4.037	2.32	22.0	2 1/2-12	MKM 5558	M20 x 90	237	14.7
		M20x2.5												



MATERIAL:
Low Carbon Steel^⑤



3181 TRI-PARK DR. GRAND BLANC, MI 48439 800-521-7918 810-953-1380 FAX 810-953-1385 INFO@MAINMFG.COM

ISO 6164										400 BAR SERIES				
FLANGE SIZE	PORT SIZE	PART NUMBER	A	B	C	Dmm	E	F	Gmm Jmm	K	MOUNTING KIT ^①			WT
											PART NO.	BOLT SIZE	O-RING	
10	-6	1669-06-06M	1.50	.75	1.25	35	.974	.47	6.5	9/16-18	MKM 5568	M6 x 35	115	.7
		1670-06-06M							M6x1					
13	-8	1669-08-08M	1.75	.88	1.25	42	1.170	.50	9.0	3/4-16	MKM 512	M8 x 35	210	.8
		1670-08-08M							M8x1.25					
19	-12	1669-12-12M	2.00	1.00	1.25	50	1.392	.75	9.0	1 1/16-12	MKM 5559	M8 x 45	214	1.2
		1670-12-12M							M8x1.25					
25	-16	1669-16-16M	2.50	1.25	1.50	62	1.726	1.00	11.0	1 5/16-12	MKM 503	M10 x 40	219	1.8
		1670-16-16M							M10x1.5					
32	-20	1669-20-20M	3.00	1.50	1.50	73	2.032	1.25	13.5	1 5/8-12	MKM 1527	M12 x 40	222	2.5
		1670-20-20M							M12x1.75					
38	-24	1669-24-24M	3.50	1.75	1.75	85	2.366	1.50	17.5	1 7/8-12	MKM 1544	M16 x 45	225	3.8
		1670-24-24M							M16x2					
51	-32	1669-32-32M	4.00	2.00	1.75	98	2.728	1.69	17.5	2 1/2-12	MKM	M16 x 45	331	4.6
		1670-32-32M							M16x2					
56	-32	1669-40-32M	4.75	2.38	1.98	118	3.285	2.12	22.0	2 1/2-12	MKM	M20 x 50	335	8.0
		1670-40-32M							M20x2.5					
63	-32	1669-48-32M	6.00	3.00	2.12	145	4.037	2.32	26.0	2 1/2-12	MKM 5561	M24 x 90	337	16.8
		1670-48-32M							M24x3					
70	-32	1669-56-32M	6.50	3.25	2.46	160	4.454	2.32	26.0	2 1/2-12	MKM 5562	M24 x 100	340	23.9
		1670-56-32M							M24x3					
80	-32	1669-64-32M	7.00	3.50	2.85	175	4.872	2.32	33.0	2 1/2-12	MKM 5563	M30 x 120	341	31.6
		1670-64-32M							M30x3.5					

① Order Separately

⑤ May Contain Lead

NOTE: The pressure rating of the assembly should not exceed the lower of the flange pad or the fitting. Check the fitting manufacturer for details.

NOTE: DIMENSIONS ARE IN INCHES UNLESS OTHERWISE NOTED.

© Copyright MAIN Mfg. 2017