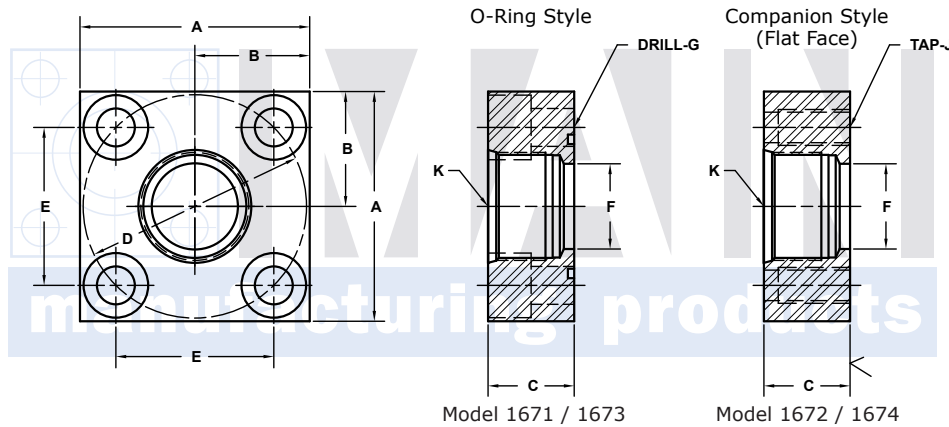
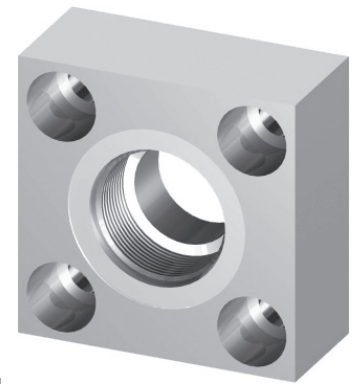


ISO 6149 THREADED IN-LINE FLANGES

ISO 6164										250 BAR SERIES				
FLANGE SIZE	PORT SIZE	PART NUMBER	A	B	C	Dmm	E	F	Gmm Jmm	K	MOUNTING KIT ^①			WT
											PART NO.	BOLT SIZE	O-RING	
10	-6	1671-06-06M	1.50	.75	1.25	35	.974	.47	6.5	M16x1.5	MKM 5568	M6 x 35	115	.7
		1672-06-06M							-----		-----	---		
13	-8	1671-08-08M	1.75	.88	1.25	42	1.170	.50	9.0	M18x1.5	MKM 512	M8 x 35	210	.8
		1672-08-08M							-----		-----	---		
19	-12	1671-12-12M	2.00	1.00	1.50	50	1.392	.75	9.0	M27x2	MKM 5559	M8 x 35	214	1.2
		1672-12-12M							-----		-----	---		
25	-16	1671-16-16M	2.50	1.25	1.50	62	1.726	1.00	11.0	M33x2	MKM 503	M10 x 40	219	1.8
		1672-16-16M							-----		-----	---		
32	-20	1671-20-20M	3.00	1.50	1.50	73	2.032	1.25	13.5	M42x2	MKM 1527	M12 x 40	222	2.5
		1672-20-20M							-----		-----	---		
38	-24	1671-24-24M	3.50	1.75	1.75	85	2.366	1.50	17.5	M48x2	MKM 1544	M16 x 45	225	3.8
		1672-24-24M							-----		-----	---		
51	-32	1671-32-32M	4.00	2.00	1.75	98	2.728	1.94	17.5	M60x2	MKM 1524	M16 x 45	228	4.8
		1672-32-32M							-----		-----	---		
56	-32	1671-40-32M	4.75	2.38	2.00	118	3.285	2.12	22.0	M60x2	MKM 5570	M20 x 60	232	8.5
		1672-40-32M							-----		-----	---		
63	-32	1671-48-32M	5.50	2.75	2.25	145	4.037	2.12	22.0	M60x2	MKM 5558	M20 x 90	237	14.7
		1672-48-32M							-----		-----	---		



MATERIAL:
Low Carbon Steel^⑤



3181 TRI-PARK DR. GRAND BLANC, MI 48439 800-521-7918 810-953-1380 FAX 810-953-1385 INFO@MAINMFG.COM

ISO 6164										400 BAR SERIES				
FLANGE SIZE	PORT SIZE	PART NUMBER	A	B	C	Dmm	E	F	Gmm Jmm	K	MOUNTING KIT ^①			WT
											PART NO.	BOLT SIZE	O-RING	
10	-6	1673-06-06M	1.50	.75	1.25	35	.974	.47	6.5	M16x1.5	MKM 5568	M6 x 35	115	.7
		1674-06-06M							-----		-----	---		
13	-8	1673-08-08M	1.75	.88	1.25	42	1.170	.50	9.0	M18x1.5	MKM 512	M8 x 35	210	.8
		1674-08-08M							-----		-----	---		
19	-12	1673-12-12M	2.00	1.00	1.25	50	1.392	.75	9.0	M27x2	MKM 5559	M8 x 45	214	1.2
		1674-12-12M							-----		-----	---		
25	-16	1673-16-16M	2.50	1.25	1.50	62	1.726	1.00	11.0	M33x2	MKM 503	M10 x 40	219	1.8
		1674-16-16M							-----		-----	---		
32	-20	1673-20-20M	3.00	1.50	1.50	73	2.032	1.25	13.5	M42x2	MKM 1527	M12 x 40	222	2.5
		1674-20-20M							-----		-----	---		
38	-24	1673-24-24M	3.50	1.75	1.75	85	2.366	1.50	17.5	M48x2	MKM 1544	M16 x 45	225	3.8
		1674-24-24M							-----		-----	---		
51	-32	1673-32-32M	4.00	2.00	1.75	98	2.728	1.69	17.5	M60x2	MKM	M16 x 45	331	4.6
		1674-32-32M							-----		-----	---		
56	-32	1673-40-32M	4.75	2.38	1.98	118	3.285	2.12	22.0	M60x2	MKM	M20 x 50	335	8.0
		1674-40-32M							-----		-----	---		
63	-32	1673-48-32M	6.00	3.00	2.12	145	4.037	2.12	26.0	M60x2	MKM 5561	M24 x 90	337	16.8
		1674-48-32M							-----		-----	---		
70	-32	1673-56-32M	6.50	3.25	2.46	160	4.454	2.12	26.0	M60x2	MKM 5562	M24 x 100	340	23.9
		1674-56-32M							-----		-----	---		
80	-32	1673-64-32M	7.00	3.50	2.85	175	4.872	2.12	33.0	M60x2	MKM 5563	M30 x 120	341	31.6
		1674-64-32M							-----		-----	---		

① Order Separately

⑤ May Contain Lead

NOTE: The pressure rating of the assembly should not exceed the lower of the flange pad or the fitting. Check the fitting manufacturer for details.

NOTE: DIMENSIONS ARE IN INCHES UNLESS OTHERWISE NOTED.

© Copyright MAIN Mfg. 2017