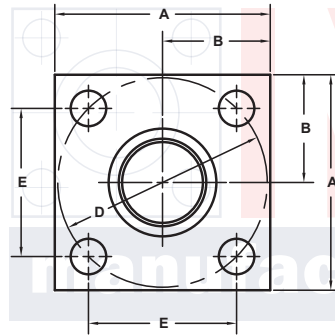
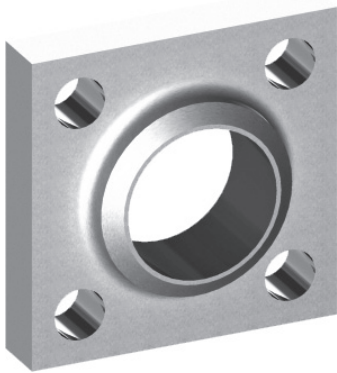


BUTT WELD IN-LINE FLANGES

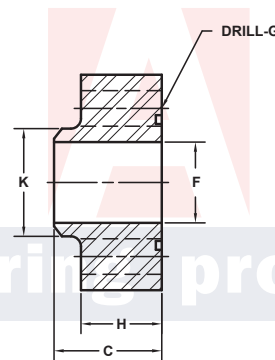
For Schedule XXS Pipe ⑥

ISO 6164 BOLT PATTERN										250 BAR SERIES																																			
FLANGE SIZE	PIPE SIZE	PART NUMBER	A	B	C	Dmm	E	F	Gmm Jmm	H	K	MOUNTING KIT®			WT																														
												PART NO.	SCREW SIZE	O-RING																															
13	1/2	1655-08-08M	4.00	2.00	2.25	98	2.728	1.50	17.5 M16x2	1.60	2.50	MKM 3531	M16 x 65	228	6.3																														
		1656-08-08M										-----	---																																
19	3/4	1655-12-12M										4.75	2.38	2.50		118	3.285	1.77	22.0 M20x2.5	1.88	3.00	MKM 5573	M20 x 80	232	10.0																				
		1656-12-12M																				-----	---																						
25	1	1655-16-16M																				5.50	2.75	3.00		145	4.037	2.30	22.0 M20x2.5	2.28	3.50	MKM 5558	M20 x 90	237	16.5										
		1656-16-16M																														-----	---												
32	1 1/4	1655-20-20M																														PLEASE USE THE 400 BAR SERIES FOUND BELOW. THE BLOCK SIZE, BOLT PATTERN AND THE O-RING ARE IDENTICAL IN FLANGE SIZES 13 - 38. IF YOU HAVE ANY QUESTIONS PLEASE CALL ENGINEERING AT 1-800-521-7918.													
		1656-20-20M																																											
38	1 1/2	1655-24-24M																																											
		1656-24-24M																																											
51	2	1655-32-32M																																											
		1656-32-32M																																											
56	2 1/2	1655-40-40M																																											
		1656-40-40M																																											
63	3	1655-48-48M																																											
		1656-48-48M																																											

MATERIAL:
Low Carbon Steel

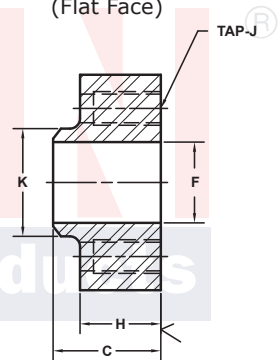


O-Ring Style



Model 1655 / 1659

Companion Style (Flat Face)



Model 1656 / 1660

3181 TRI-PARK DR. GRAND BLANC, MI 48439 800-521-7918 810-953-1380 FAX 810-953-1385 INFO@MAINMFG.COM

ISO 6164 BOLT PATTERN										400 BAR SERIES																																													
FLANGE SIZE	PIPE SIZE	PART NUMBER	A	B	C	Dmm	E	F	Gmm Jmm	H	K	MOUNTING KIT®			WT																																								
												PART NO.	SCREW SIZE	O-RING																																									
13	1/2	1659-08-08M	1.75	.88	1.25	42	1.170	.25	9.0 M8x1.25	.81	.88	MKM 512	M8 x 35	210	.8																																								
		1660-08-08M										-----	---																																										
19	3/4	1659-12-12M										2.00	1.00	1.38		50	1.392	.44	9.0 M8x1.25	.90	1.12	MKM 5559	M8 x 35	214	1.1																														
		1660-12-12M																				-----	---																																
25	1	1659-16-16M																				2.50	1.25	1.50		62	1.726	.60	11.0 M10x1.5	1.00	1.38	MKM 503	M10 x 40	219	1.8																				
		1660-16-16M																														-----	---																						
32	1 1/4	1659-20-20M																														3.00	1.50	1.75		73	2.032	.89	13.5 M12x1.75	1.20	1.75	MKM 1502	M12 x 50	222	2.8										
		1660-20-20M																																								-----	---												
38	1 1/2	1659-24-24M																																								3.50	1.75	2.00		85	2.366	1.10	17.5 M16x2	1.44	2.00	MKM 515	M16 x 60	225	4.4
		1660-24-24M																																																		-----	---		
51	2	1659-32-32M	4.00	2.00	2.25	98	2.728	1.50	17.5 M16x2	1.60	2.50				MKM 5560																																					M16 x 65	331	6.3	
		1660-32-32M													-----																																					---			
56	2 1/2	1659-40-40M										4.75	2.38	2.75	118	3.285	1.77	22.0 M20x2.5	1.98	3.00	MKM 5538				M20 x 80																											335	10.8		
		1660-40-40M																			-----				---																														
63	3	1659-48-48M																			6.00	3.00	3.00	145	4.037	2.30	26.0 M24x3	2.12	3.50	MKM 5561	M24 x 90				337																	18.3			
		1660-48-48M																												-----	---																								
70	3 1/2	1659-56-56M																												6.50	3.25	3.50	160	4.454	2.73	26.0 M24x3	2.46	4.00	MKM 5562	M24 x 100	340				25.0										
		1660-56-56M																																					-----	---															
80	4	1659-64-64M																																					7.00	3.50	4.00	175	4.872	3.15		33.0 M30x3.5	2.85	4.50	MKM 5563	M30 x 120	341				31.5
		1660-64-64M																																															-----	---					

① Order Separately

⑥ Other Pipe and Tube Sizes are Available